

DELTA® protects property. Saves energy. Creates comfort.

## TECHNICAL DATA SHEET

### DELTA®-VENT S / PLUS

#### Water-resistive Barrier & Air Barrier

#### MATERIAL

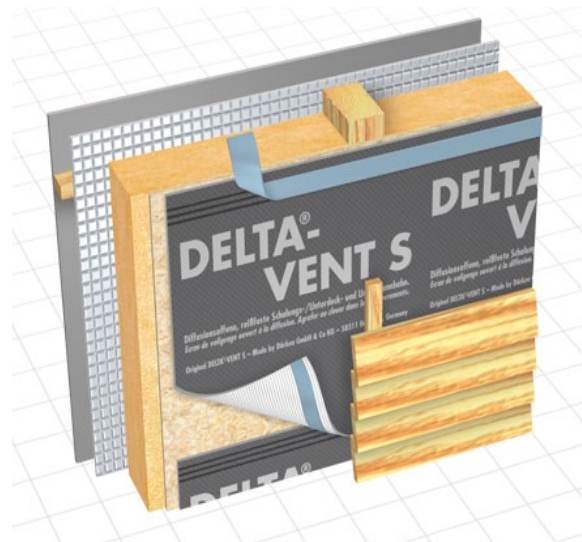
DELTA®-VENT S is a 3-layer water-resistive barrier (WRB) and air barrier. Its two outer layers are made of a high strength spun-bonded polypropylene (PP) fabric. They are thermally bonded to a highly vapor permeable, watertight polymeric middle layer. The fabric layer on the lower side protects the WRB against damage (e.g. roughly sawn sheathing). The matte gray color of DELTA®-VENT S prevents blinding glare during installation.

#### PROPERTIES

DELTA®-VENT S is a highly vapor permeable WRB, allowing moisture within the building enclosure to escape through the membrane via diffusion. Its high permeability and air-tightness make it an ideal air and water-resistive barrier membrane for energy-efficient construction. The product is watertight and protects the building enclosure from wind-driven rain. DELTA®-VENT S is very lightweight and tear-resistant. This membrane withstands the rigors of jobsites, as well as tough wind and weather. Its performance is unaffected by surfactants.

#### APPLICATION

DELTA®-VENT S is installed outboard of the sheathing prior to the application of the final cladding system. DELTA® Accessories complement the WRB / Air Barrier installation. DELTA®-VENT S is also available in the PLUS version with a self-adhesive edge.



DELTA® products support sustainable and energy-efficient building practices, including efforts toward achieving LEED® certification (LEED® for New Construction & Major Renovations, LEED® for Core and Shell, LEED® for Existing Buildings and LEED® for Homes).

For technical support, call our technical support team at 1-888-4DELTA4 (1-888-433-5824) extension 326, or visit [www.cosella-dorcken.com](http://www.cosella-dorcken.com).

## Technical Data

Product name	DELTA®-VENT S	
Color	gray	
Water vapor transmission	472 g/m <sup>2</sup> /24 h	ASTM E96-05, Proc. A
	820 g/m <sup>2</sup> /24 h	ASTM E96-05, Proc. B
Vapor permeance	69 perms [grains/h/ft <sup>2</sup> /in Hg]	ASTM E96-05, Proc. A
	120 perms [grains/h/ft <sup>2</sup> /in Hg]	ASTM E96-05, Proc. B
Breaking load	MD 76 lb/2in	ASTM D5035-06
	CD 47 lb/2in	
Elongation at break	MD 25 %	ASTM D5035-06
	CD 65 %	
Tear resistance	MD 1078 g	ASTM D1922-06a
	CD 1588 g	
Trapezoid tearing strength	MD 22 lb	ASTM D4533-04
	CD 15 lb	
Fastener pull-through force	133 N	ASTM D3462-03
Water penetration resistance	643 cm	CAN/CGSB-4.2 #26.3-95
Water impact penetration resistance	no water passing	AATCC 42-2000
Flame spread	25	ASTM E84-09
	NFPA Class A; UBC Class I	
Smoke developed	105	ASTM E84-09
	NFPA Class A; UBC Class I	
Air permeance	< 0.02 l/(s x m <sup>2</sup> ) @ 75 Pa	ASTM E2178
Temperature range	-40 °F to +176 °F (-40 °C to +80 °C)	
Mass per unit area	> 4.7 oz/yd <sup>2</sup> (150 g/m <sup>2</sup> )	CSA A220.1-06 4.4.4
Roll weight	approx. 24 lb (11 kg)	
Roll length	164' (50 m)	
Roll width	4' 11" (1.5 m)	
Maximum UV (sunlight) exposure	Always cover as soon as possible. Maximum exposure 6 week.	
DELTA® Accessories	DELTA®-MULTI BAND 2" x 82' DELTA®-FLEXX-BAND 4" x 33' DELTA®-THAN 310 ml cartridge	

## ICC ESR-2932 DELTA® Water-resistive Barriers

Cosella-Dörken Products Inc., 4655 Delta Way, Beamsville, Ontario L0R 1B4  
1-888-4 DELTA 4, (905) 563-3255 Fax: (905) 563-5582  
[info@cosella-dorcken.com](mailto:info@cosella-dorcken.com), [www.cosella-dorcken.com](http://www.cosella-dorcken.com)

A company of the Dörken Group