

DELTA<sup>®</sup> protects property. Saves energy. Creates comfort.



## DELTA<sup>®</sup>-VENT SA

PREMIUM QUALITY

**Vapor Permeable, Self-adhering  
Water-resistive Barrier & Air Barrier  
with Self-adhesive Edge Lap.™**



- Water-resistive barrier & air barrier
- Vapor permeable
- Improves energy efficiency
- Highly aggressive adhesive
- Eliminates fasteners
- Unique front side adhesive lap edge
- For new construction & renovation

DELTA®-VENT SA is a critical component of an energy-efficient building enclosure, improving the performance of the wall system. DELTA®-VENT SA is fully adhered to the substrate so fasteners are not required. Hundreds of potential air leakage points are eliminated. It is quick to apply and has a convenient split release liner for easy application. DELTA®-VENT SA is dimensionally stable and has the most tightly sealed and secure side laps in the industry.

**Air Barrier That Sticks.™**

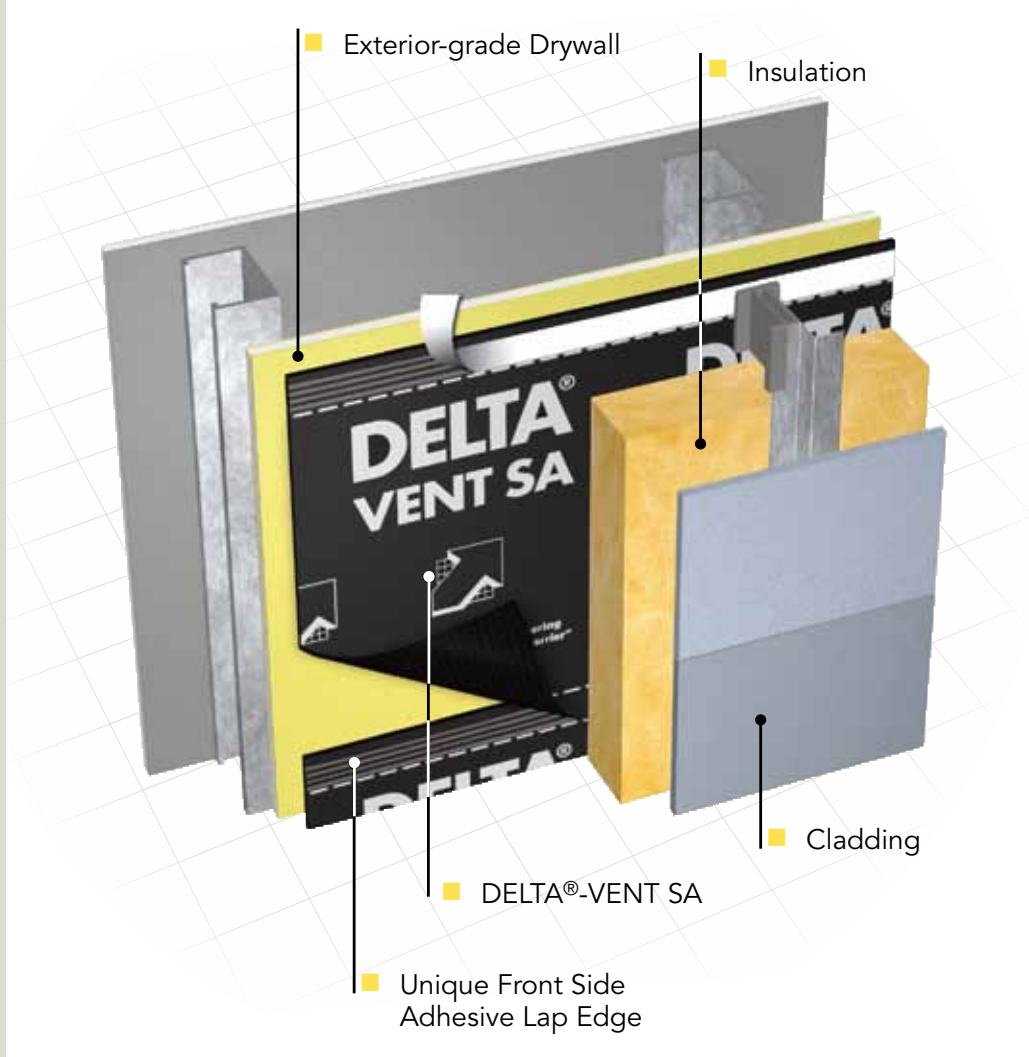
# DELTA®-VENT SA

**For a variety of wall assemblies. Vapor p**

**PREMIUM QUALITY**

**DELTA®-VENT SA...**

- ... improves occupant comfort
- ... provides greater energy efficiency
- ... lowers operating costs by improving energy performance
- ... extends building life
- ... has better moisture management leading to superior mold resistance
- ... better manages uncontrolled air leakage





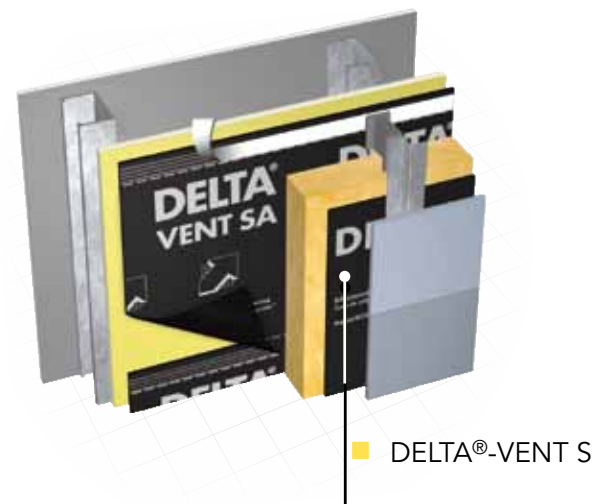
# A

## permeable. Extra strong laps and aggressively self-adhesive.

DELTA®-VENT SA is a highly vapor permeable WRB and air barrier for energy-efficient building enclosures. Its highly aggressive adhesive bonds firmly and strongly to the substrate. Fasteners that create risky holes are eliminated. Superior lap adhesion and dimensional stability means DELTA®-VENT SA stays stuck in place and does not leak. DELTA®-VENT SA is the most technologically advanced air- and water-tight membrane system available.

### DELTA®-VENT SA...

- ... improves energy efficiency
- ... has a highly aggressive special adhesive
- ... helps improve the performance of the building enclosure
- ... has an air-and water-tight self-adhesive edge
- ... is highly moisture vapor permeable (50 perms)
- ... bonds strongly to most substrates
- ... is a very effective air barrier
- ... is a very effective water-resistive barrier
- ... eliminates use of potentially leaky fasteners
- ... has superior tear-resistance and is very light-weight
- ... has an easy-to-use split release liner
- ... matte gray color reduces irritating glare during installation
- ... is unaffected by surfactants
- ... is Class A Fire-rated



Using DELTA®-VENT S outboard of the insulation prevents “wind-washing” (air blowing through the insulation), improving energy efficiency.

## Technical Data

Product name	DELTA®-VENT SA	
Color	gray	
Adhesive coating	Full surface coating with vapor permeable pressure-sensitive adhesive	
Water vapor transmission	214 g/m <sup>2</sup> /24 h	ASTM E96-05, Proc. A
	343 g/m <sup>2</sup> /24 h	ASTM E96-05, Proc. B
Vapor permeance	31 perms [grains/h/ft <sup>2</sup> /in Hg]	ASTM E96-05, Proc. A
	50 perms [grains/h/ft <sup>2</sup> /in Hg]	ASTM E96-05, Proc. B
Breaking strength	MD 71 lb	ASTM D5034-95
	CD 65.4 lb	
Elongation at break	MD 27.8%	ASTM D5034-95
	CD 60.1 %	
90° Peel adhesion	Pass	AAMA 711-5.3 (ASTM D3330)
Accelerated aging (U.V.)	Pass	AAMA 711-5.4
Elevated temperature	Pass (level 3)	AAMA 711-5.5 (ASTM D3330)
Thermal cycling	Pass	AAMA 711-5.6
Adhesion after water immersion	Pass	AAMA 711-5.8
Bent test	Pass	AC-38 3.3.4
Water resistance hydrostatic pressure	Pass (55 cm > 5 hours) (Grade D 60 min paper equivalent.)	AATCC 127-1985
Linear dimensional change at elevated temperature (185°F (85°C))	MD - 1.4%	ASTM D1204-08
	CD +0.1%	
Resistance to puncture	78.6 lbs (333.1 N)	ASTM E154-99 (10)

Resistance to puncture	78.6 lbs (333.1 N)	ASTM E154-99 (10)
Low temperature flexibility	Pass	ASTM D1970-01
Crack bridging ability	Pass -15 °F (-26 °C)	ASTM C1305-06
Flame spread	14	ASTM E84-09
	NFPA Class A: IBC Class A	
Smoke developed	47	ASTM E84-09
	NFPA Class A: IBC Class A	
Air permeance	Pass (<0.02 l/(s x m <sup>2</sup> ))@75 Pa)	ASTM E2178
Application temperature	Minimum 40 °F (5 °C)	
Service temperature	-40 °F to + 176 °F (-40 °C to + 80 °C) W/ Primer	
	-13 °F to + 176 °F (-25 °C to + 80 °C) W/O Primer	
Roll weight	approx. 40 lb (18 kg)	
Roll size	4'11" (1.5 m) x 115' (35 m)	
Maximum UV (sunlight) exposure	Do not expose to UV (sunlight) for longer than 50 days	
DELTA® System Components	DELTA®-MULTIBAND 2" x 82' (60 mm x 25 m) DELTA®-FLEXX BAND 4" x 33' (100 mm x 10 m) DELTA®-FLASHING 4" x 75' (100 mm x 22.8 m) DELTA®-FLASHING 9" x 75' (230 mm x 22.8 m) DELTA®-FAS CORNER DELTA®-THAN 310 ml (10.9 fl oz)/ cartridge or DOW CORNING® 758 DELTA®- LVC PRIMER 4.72 gal. (17.9 L)/ pail	

# DELTA®

DELTA® System ...



**... for owners:**

" ... What I get is a mature problem solution provided at a fair price by the top specialist in quality branded products!"

**... for contractors:**

" ... What I get is a complete system made by a single manufacturer that enables me to do anything to the owner's entire satisfaction. There is no safer way!"

**... for planners:**

" ... I can be certain that innovative products will be used in implementing my roof and cellar plans in a systematic and forward-looking way"

The information printed in this brochure reflects product information and specifications at the date of printing. The manufacturer reserves the right to make changes when necessary.

**COSELLA DÖRKEN**

Cosella-Dörken Products Inc.  
 4655 Delta Way  
 Beamsville, Ontario  
 L0R 1B4  
 (905) 563-3255  
 Fax: (905) 563-5582  
 1-888-4DELTA4 (433-5824)  
 info@cosella-dorcken.com  
 www.delta-ventsa.com

A company of the Dörken Group



Canadian Home Builders' Association

DELTA®-branded quality products manufactured by Cosella-Dörken.