

DELTA® protects property. Saves energy. Creates comfort.

TECHNICAL DATA SHEET

DELTA®-VENT SA

Self-Adhered Water-resistive Barrier & Air Barrier

MATERIAL

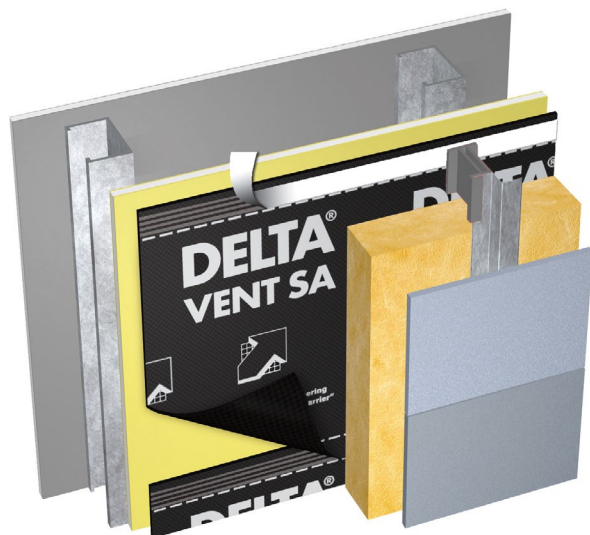
DELTA®-VENT SA is a 3-layer self-adhered water-resistive barrier (WRB) and air barrier. Its two outer layers are made of a high strength spun-bonded polypropylene (PP) fabric. They are thermally bonded to a highly vapor permeable, watertight polymeric middle layer. DELTA®-VENT SA maintains high vapor permeability and has a full surface coating of a high tack adhesive for bonding to common substrates. It has a split release liner for ease of application. The matte gray color of DELTA®-VENT SA prevents blinding glare during installation.

PROPERTIES

DELTA®-VENT SA is a vapor permeable WRB, allowing moisture within the building enclosure to escape through the membrane via diffusion. Its permeability and air-tightness make it an ideal air and water-resistive barrier membrane for energy-efficient construction. DELTA®-VENT SA not only passes, but also dramatically exceeds the most stringent requirements of the Air Barrier Association of America (ABAA) and of the National Building Code of Canada (NBC 2010) based on the results of ASTM E2357 Standard Test Method for Determining Air Leakage of Air Barrier Assemblies. Full adhesion maximizes air tightness and minimizes fastener penetrations. The product is watertight and protects the building enclosure from wind-driven rain. DELTA®-VENT SA is very light-weight and tear-resistant. This membrane withstands the rigors of jobsites, as well as tough wind and weather. Its performance is unaffected by surfactants. DELTA®-VENT SA is equivalent to a 60 minute Grade D building paper.

APPLICATION

DELTA®-VENT SA is installed outboard of the sheathing prior to the application of the final cladding system. DELTA® Accessories complement the WRB / Air Barrier installation. It may be adhered to concrete, masonry, OSB, plywood, or exterior grade drywall. Where required DELTA® primers are available.



Technical Data

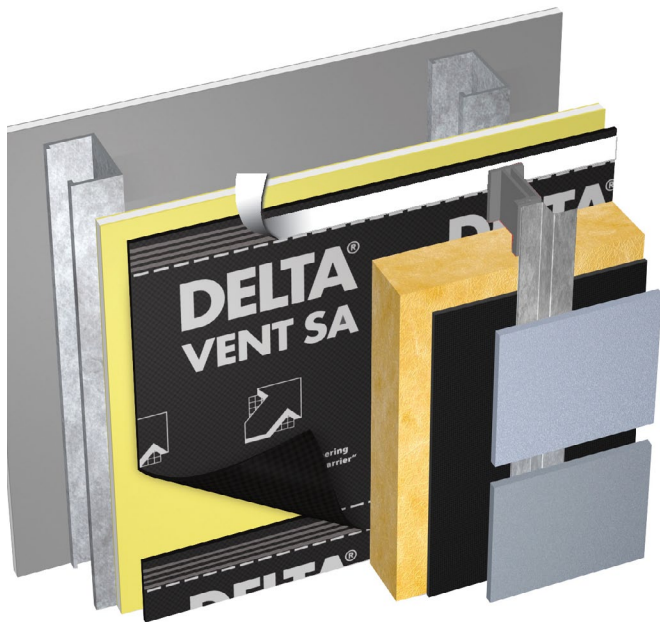
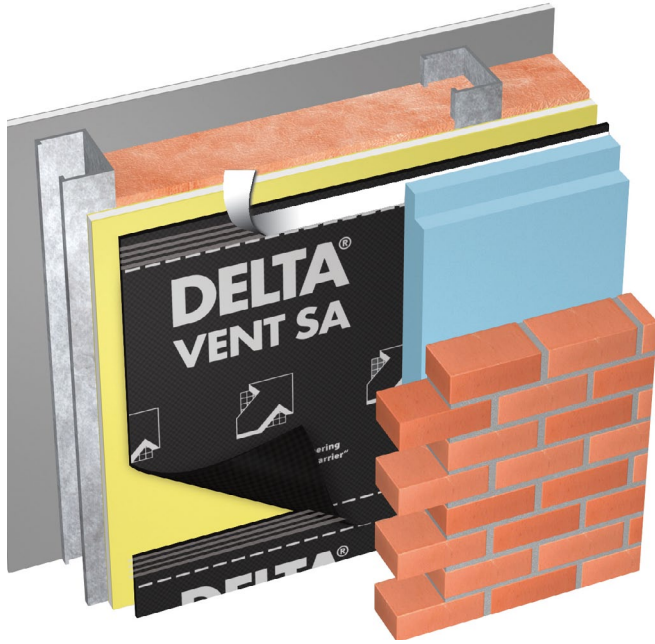
Product name	DELTA®-VENT SA	
Color	gray	
Adhesive coating	Full surface coating with vapor permeable pressure-sensitive adhesive	
Water vapor transmission	214 g/m ² /24 h	ASTM E96-05, Proc. A
	343 g/m ² /24 h	ASTM E96-05, Proc. B
Vapor permeance	31 perms [grains/h/ft ² /in Hg]	ASTM E96-05, Proc. A
	50 perms [grains/h/ft ² /in Hg]	ASTM E96-05, Proc. B
Air Leakage of Air Barrier Assemblies	< 0.2 L/(s•m ²) @ 75 Pa (0.04 cfm/ft ² @ 1.57 lb/ft ²) as per ABAA and NBC 2010 requirements	
Breaking strength	MD 71 lb	ASTM D5034-95
	CD 65.4 lb	
Elongation at break	MD 27.8 %	ASTM D5034-95
	CD 60.1 %	
90° Peel adhesion	Pass	AAMA 711-5.3 (ASTM D3330)
Accelerated aging (U.V)	Pass	AAMA 711-5.4
Elevated temperature	Pass (Level 3)	AAMA 711-5.5 (ASTM D3330)
Thermal cycling	Pass	AAMA 711-5.6
Adhesion after water immersion	Pass	AAMA 711-5.8
Bent test	Pass	AC-38 3.3.4
Water resistance hydrostatic pressure	Pass (55 cm > 5 hours)	AATCC 127-1985

DELTA® products support sustainable and energy-efficient building practices, including efforts toward achieving LEED® certification (LEED® for New Construction & Major Renovations, LEED® for Core and Shell, LEED® for Existing Buildings and LEED® for Homes).

For technical support, call our technical support team at 1-888-4DELTA4 (1-888-433-5824) extension 326, or visit www.cosella-dorcken.com.

LOCKED TIGHT ADHESIVE EDGE

DELTA®-VENT SA has a special edge running along the front side of one long edge. It has a release liner that, when removed, exposes a high tack adhesive. This adhesive bonds tightly and permanently with the next overlapping course of DELTA®-VENT SA, creating a secure and very air and water-tight seal.



Technical Data

Water resistance hydrostatic pressure	Pass (55 cm > 5 hours)	AATCC 127-1985
Linear dimensional change at elevated temperature (185 °F (85 °C))	MD -1.4%	ASTM D1204-08
	CD +0.1%	
Resistance to puncture	78.6 lbs (333.1N)	ASTM E154-99(10)
Low temperature flexibility	Pass	ASTM D1970-01
Crack bridging ability	Pass -15 °F (-26 °C)	ASTM C1305-06
Flame spread	14	ASTM E84-09
	NFPA Class A; IBC Class A	
Smoke developed	47	ASTM E84-09
	NFPA Class A; IBC Class A	
Air permeance	Pass ($< 0.02 \text{ l/(s x m}^2) @ 75 \text{ Pa}$)	ASTM E2178
Application temperature	Minimum 40 °F (5 °C)	
Service temperature	-40 °F to +176 °F (-40 °C to +80 °C) W / Primer	
	-13 °F to +176 °F (-25 °C to +80 °C) W/O primer	
Roll weight	approx. 40 lb (18 kg)	
Roll size	4' 11" (1.5 m) x 115' (35 m)	
Maximum UV (sunlight) exposure	Do not expose to UV (sunlight) for longer than 50 days.	
DELTA® Accessories	DELTA®-MULTI BAND 2" x 82' (60 mm x 25m) DELTA®-FLEXX-BAND 4" x 33' (100 mm x 10 m) DELTA®-FLASHING 4" x 75' (100 mm x 22.8 m) DELTA®-FLASHING 9" x 75' (230 mm x 22.8 m) DELTA®-FAS CORNER DELTA®-THAN 310 ml (10.9 lf oz) / cartridge or DOW CORNING® 758 DELTA®-LVC PRIMER 4.72 gal. (17.9 L) / pail	

DELTA® products support sustainable and energy-efficient building practices, including efforts toward achieving LEED® certification (LEED® for New Construction & Major Renovations, LEED® for Core and Shell, LEED® for Existing Buildings and LEED® for Homes).

For technical support, call our technical support team at 1-888-4DELTA4 (1-888-433-5824) extension 326, or visit www.cosella-dorcken.com.

Cosella-Dörken Products Inc., 4655 Delta Way, Beamsville, Ontario L0R 1B4
1-888-4 DELTA 4, (905) 563-3255 Fax: (905) 563-5582
info@cosella-dorcken.com, www.cosella-dorcken.com

A company of the Dörken Group