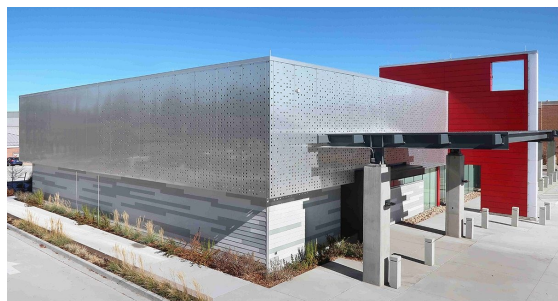




Griggs Systems represents the highest quality manufactures in the construction industry. We service architects, Designers and construction professionals in Northern California. We are proud to represent the following manufactures.



Morin

A Kingspan Group Company

Morin specializes in roll forming or architectural heavy gauge single-skin metal wall and roof systems. With over 100 profiles and three manufacturing locations, Morin is well positioned to produce for any size project.



Kingspan Light + Air | CPI Daylighting pioneered the use of polycarbonate panel systems for architectural use in the 1980's. They continue to offer new and innovative daylighting products including skylights, translucent curtain walls, windows and canopy systems.



Engineered and fully tested rainscreen systems, Aluminum panel systems, composite panels (Reynobond, Alpollic, & Larson), column cover wraps, Zinc series panel and continuous gutter series.

AWV

Since 1904 AWV has been dedicated to superior louver and sunshade design. With options in aluminum, galvanized steel, acoustical, thin line, penthouse, hurricane and wind driven rain rated louvers we will have a solution for you.

Parklex

Parklex uses wood products to emphasize the natural beauty found in real wood, its feel and natural warmth, while combining it with modern technology. Parklex is used in exterior facades, wood decking, interior floor, wall & ceiling applications ensuring a chromatic continuity. Each of these contain a surface composition that eliminates the need for any maintenance or treatment.



Old Mill Brick is a complete fire-tested thin veneer wall assembly system. Old Mill Bricks, Panel+ system is the most cost-effective way to provide a code-compliant air barrier, continuous insulation, and a durable, high-quality thin veneer. They offer R-5 to R-20 insulation value without thermal drift in a Continuous Insulation configuration backed by a 15 Year System Warranty.



For over 110 years SVK has been providing exterior building products. A global player in fiber cement façade panels SVK produces natural products in ever color imaginable, with a wide range of possible finishes.



DIZAL

Dizal is a manufacturing company specializing in the design, production, and marketing of digitally printed exterior building products. Our technology prints authentic scanned textures of various materials from high definition digital printing process that provide an unrivaled realism.

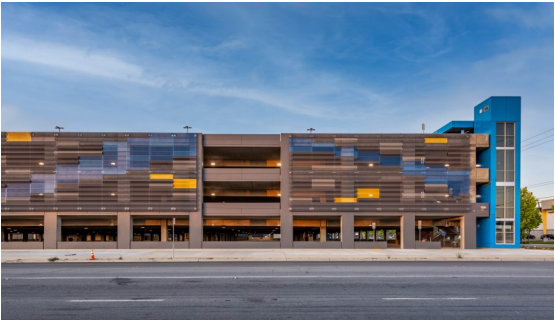


HICKMAN EDGE SYSTEMS

Hickman Edge Systems manufactures easily installed metal roof edging, parapet wall coping, fascia, commercial gutters, gravel stops, downspouts, conductor heads, reglets and trims



With over 125 years of experience, we are the leading manufacturer of high-performance air and moisture barriers. Being a private family-owned company, we control all of our own technology, innovations and manufacturing. Our goal is to ensure that architects and customers select the right product for their buildings.



valmont STRUCTURES

Expanded and Perforated metal, wire mesh and curtains utilized in interior and exterior façades . Specializing in parking garages and full engineered systems.



STONEWOOD™ ARCHITECTURAL PANELS

Stonewood Architectural Panels are a solid phenolic panel for use in open joint exterior cladding. Stonewood panels have are high impact, scratch resistant with a non-porous surface providing ease of maintenance. Manufactured in Wisconsin with installations all over the United States.



Ceraclad Rain Screen Exterior Fiber Cement Siding system consist of pre-finished siding panels in a variety of patterns and texture, all of which have been designed for ease of installation using a healthy technology for moisture management and heat-resistant system.



Architectural Eco-Technology

The qualities of rare tropical hardwoods served as yardsticks in developing the Geolam wood composite. Geolam took recycled softwood and recycled polymer resin to create a material whose defining features include a natural wood look coupled with outstanding durability. This was the dawning day of the 'wood-polymer composite, a material that satisfies the highest ecological standards.



The Most Advanced Thermally Isolating Rainscreen attachment Systems on the market today. Knight Wall is focused on the means and methods of attaching rainscreen façade panels to the building while reducing the impact on the insulation.



Terreal manufactures a wide range of terracotta products for roof tiles, structure, façade and decoration of residential, tertiary and agricultural buildings. Terreal includes the following international brands: Guiraud, Tiles Lambert, TBF, Ludowici, Cabezon, San Marco and Lahera.



Natural stone rainscreen panels that create striking contrast or work in harmony with nature, whatever you've envisioned you can realize impressive designs with Petrarch reconstituted stone rainscreen. Petrarch allows you to add exciting new elements to every sector project.



High-Quality façade solution that allows you to choose the color, expression, shape and surface texture to give your building a personal style. They have 60 standard colors and three gloss levels base on NCS or RAL.

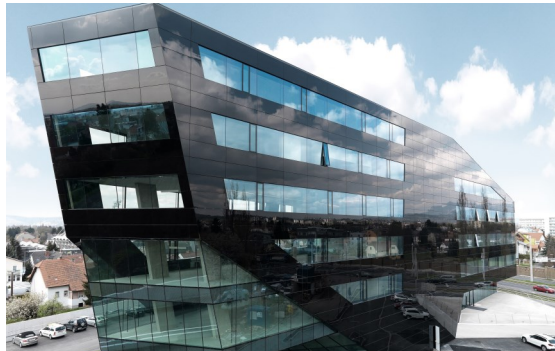


ArmorWall Structural Insulated Sheathing™ is an innovative building enclosure system used in commercial and multifamily buildings that combines four tradi-



The largest Sintered Stone on the market, which enables a high yield for each piece and reduces completion times thanks to the large formats available.

NEOLITH® SKYLINE ventilated facades provide continuous insulation and block direct solar radiation for considerable energy savings.



Building with conscience.

StoVentec™ Rainscreen® Wall Glass and Render Systems are a complete, fully-tested, and code-approved high-performance ventilated Rainscreen® system. This includes a best-in-class air and moisture barrier, robust mineral wool continuous insulation,



Barrier One Concrete Admixtures, create concrete admixtures that improve the concrete used in construction to increase durability, reduce risk, and shorten the construction timeline. It is integral to the concrete and not surface applied. Its application would not interfere with the bonding of adhesives, resinous coatings, or cementitious underlayments. This results in concrete that is denser, stronger, with increased abrasion resistance, reduced slab warping, and significantly reduced shrinkage and permeability